

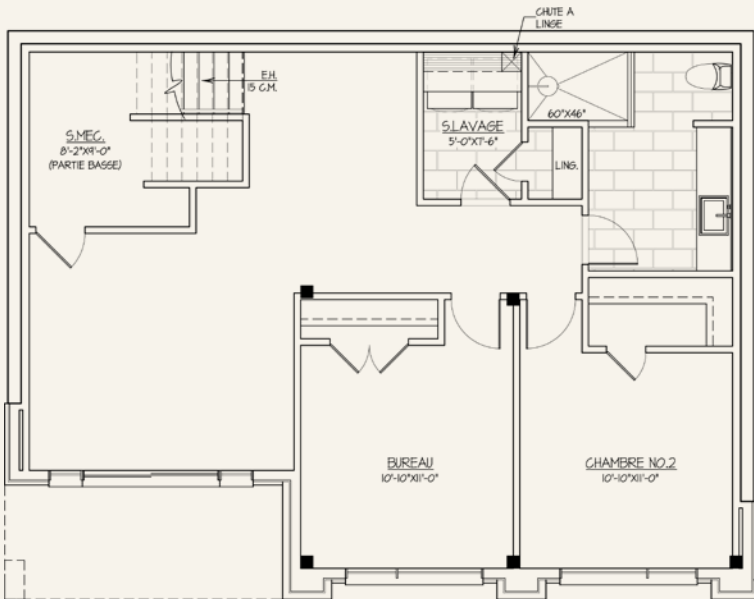
# PANORAMIQUE

MONTMORENCY  
CHARPENTES ■ TIMBER FRAMES



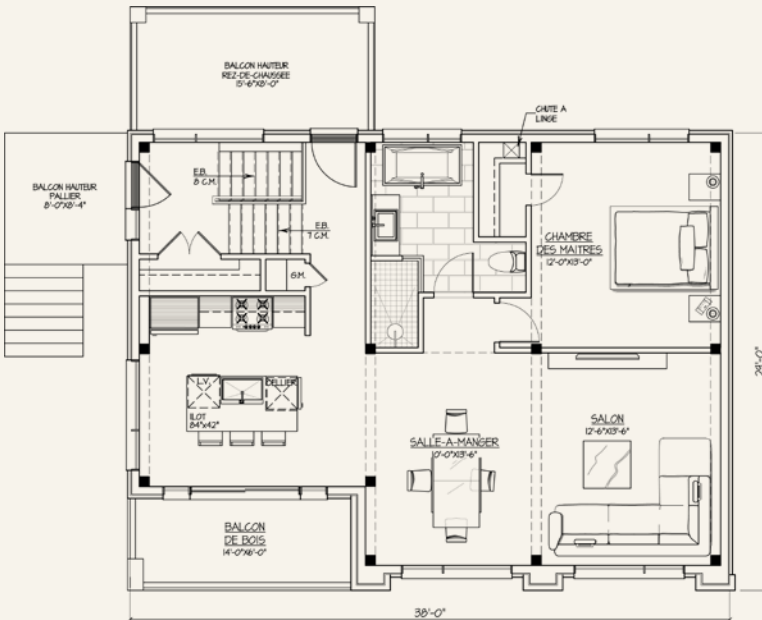
CONSTRUCTION  
**SAVCO**





**REZ-DE-JARDINS**

SUPERFICIE HABITABLE: 1 000 P.I.C.A.



**ÉTAGE**

SUPERFICIE HABITABLE: 1 000 P.I.C.A.



# MONTMORENCY

CHARPENTES ■ TIMBER FRAMES

[www.charpentesmontmorency.com](http://www.charpentesmontmorency.com)

[info@charpentesmontmorency.com](mailto:info@charpentesmontmorency.com)

T 418 841-2007

CONSTRUCTION

# SAVCO



[www.constructionsavco.com](http://www.constructionsavco.com)

T 514 743-2390